

2016 - 2017 Report Card for Findlay Digital Academy

SCHOOL RATING

**Exceeds
Standards**

Location: Findlay
Administrator: Rosemary V. Rooker

*Directory information current as of the
2016-2017 Report Card publication date*

**Career Technical
Planning District:** Millstream Career
Cooperative CTPD

Enrollment: 142
Attendance Rate: 100.0%



High School Test Passage Rate

The High School Test Passage Rate component represents the number of students who passed all five state tests that are required for graduation.

Students who Passed all Five Tests..... 78.6%

RATING

**Exceeds
Standards**



Graduation Rate

The Graduation Rate component looks at the percent of students who are successfully finishing high school with a diploma in four, five, six, seven or eight years.

Graduation Rates

73.3% of students graduated in 4 years
72.7% of students graduated in 5 years
66.3% of students graduated in 6 years
76.0% of students graduated in 7 years
61.2% of students graduated in 8 years
69.6% is the weighted average of all graduation rates.

A graduation rate is not calculated if there are not at least 10 students in the graduating class.



Gap Closing

The Gap Closing component shows how well schools are meeting the performance expectations for our most vulnerable populations of students in English language arts, math and graduation.

Annual Measurable Objectives.....87.3

RATING

**Exceeds
Standards**

4-YEAR RATING

**Exceeds
Standards**

5-YEAR RATING

**Exceeds
Standards**

6-YEAR RATING

**Exceeds
Standards**



Progress

The Progress component looks closely at the growth that all students are making during the school year.

Value-Added
Overall.....Meets Standards

COMPONENT GRADE

**Meets
Standards**

7-YEAR RATING

**Exceeds
Standards**

8-YEAR RATING

**Exceeds
Standards**

COMBINED RATING

**Exceeds
Standards**

High School Test Passage Rate

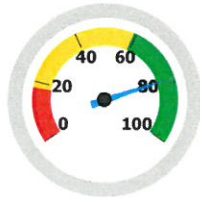


The High School Test Passage Rate component represents the number of students who passed all five state tests that are required for graduation.

Students Who Passed All Five Tests

RATING

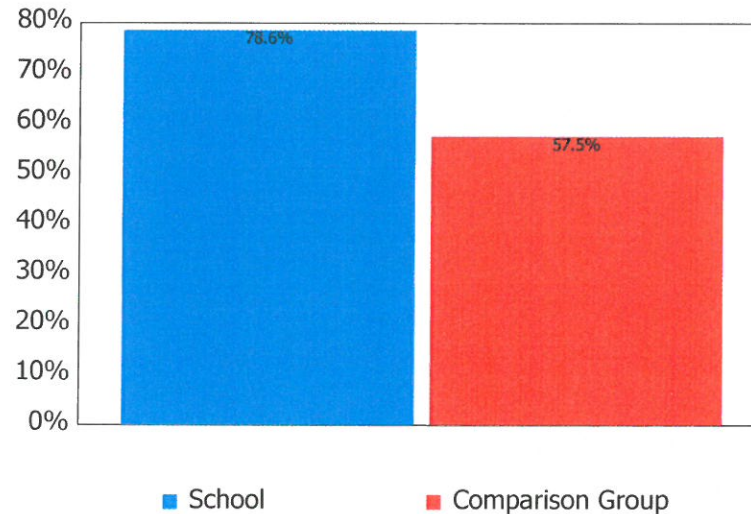
**Exceeds
Standards**



78.6%

Exceeds Standards	68.0 - 100.0%
Meets Standards	32.0 - 67.9%
Does Not Meet Standards	0.0 - 31.9%

How Does This School Compare to the Other Dropout Recovery Program Schools in Ohio?



Gap Closing

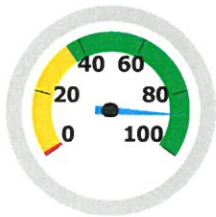


The Gap Closing component shows how well schools are meeting the performance expectations for our most vulnerable populations of students in English language arts, math and graduation.

GRADE

Exceeds Standards

AMO Points



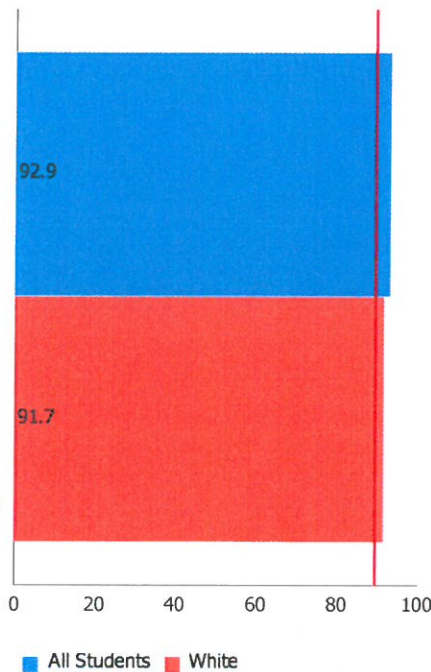
87.3%

Exceeds Standards	36.0 - 100.0%
Meets Standards	1.0 - 35.9%
Does Not Meet Standards	0.0 - 0.9%

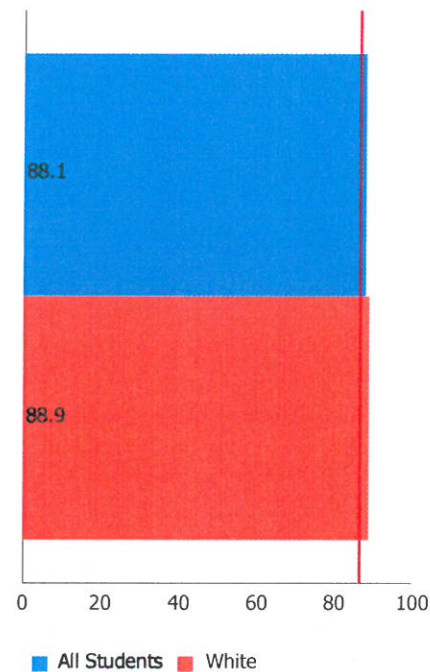
Annual Measurable Objectives

Annual Measurable Objectives (AMOs) compare the performance of all students to a state goal which is displayed as the red line in the following charts. These charts show how well each group achieves that goal in ELA, math and graduation – and emphasize any achievement gaps that exist between groups. The ultimate goal is for all groups to achieve at high levels.

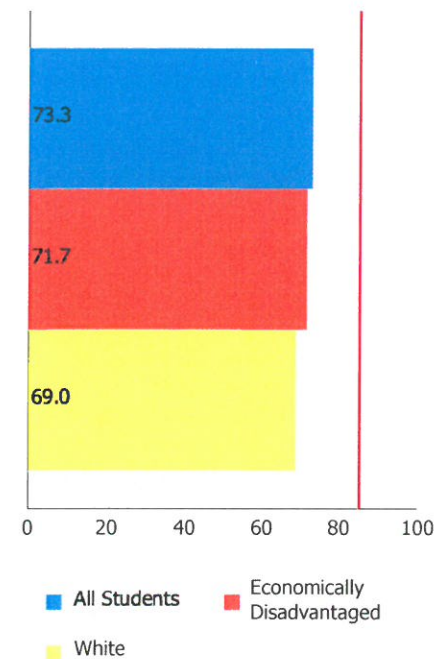
English Language Arts



Math



Graduation Rate



The red line on each graph identifies the Annual Measurable Objective. The 2017 AMO for ELA is 89.4%, for Math is 86.5%, and for Graduation Rate is 85.1%. Subgroups with fewer than 30 students are not rated and do not appear on the graphs.

Graduation Rate



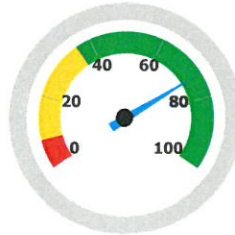
The Graduation Rate component looks at the percent of students who are successfully finishing high school with a diploma in four, five, six, seven or eight years.

4-Year Graduation Rate

The 4-year graduation rate applies to the Class of 2016 who graduated within four years, i.e. students who entered the 9th grade in 2013 and graduated by 2016.

RATING
**Exceeds
Standards**
73.3%

Exceeds 36.0 - 100.0%
Meets 8.0 - 35.9%
Does Not Meet 0.0 - 7.9%

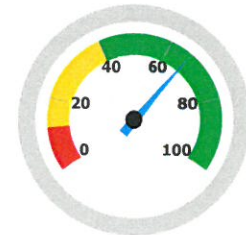


6-Year Graduation Rate

The 6-year graduation rate applies to the Class of 2014 who graduated within six years, i.e. students who entered the 9th grade in 2011 and graduated by 2016.

RATING
**Exceeds
Standards**
66.3%

Exceeds 40.0 - 100.0%
Meets 12.0 - 39.9%
Does Not Meet 0.0 - 11.9%

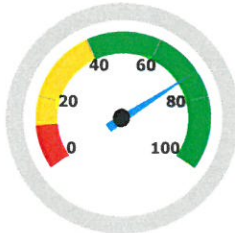


5-Year Graduation Rate

The 5-year graduation rate applies to the Class of 2015 who graduated within five years, i.e. students who entered the 9th grade in 2012 and graduated by 2016.

RATING
**Exceeds
Standards**
72.7%

Exceeds 40.0 - 100.0%
Meets 12.0 - 39.9%
Does Not Meet 0.0 - 11.9%

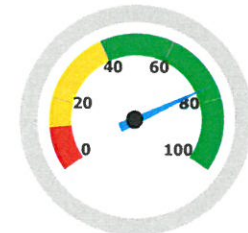


7-Year Graduation Rate

The 7-year graduation rate applies to the Class of 2013 who graduated within seven years, i.e. students who entered the 9th grade in 2010 and graduated by 2016.

RATING
**Exceeds
Standards**
76.0%

Exceeds 40.0 - 100.0%
Meets 12.0 - 39.9%
Does Not Meet 0.0 - 11.9%

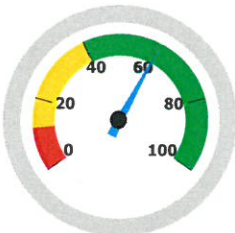


8-Year Graduation Rate

The 8-year graduation rate applies to the Class of 2012 who graduated within eight years, i.e. students who entered the 9th grade in 2009 and graduated by 2016.

RATING
**Exceeds
Standards**
61.2%

Exceeds 40.0 - 100.0%
Meets 12.0 - 39.9%
Does Not Meet 0.0 - 11.9%

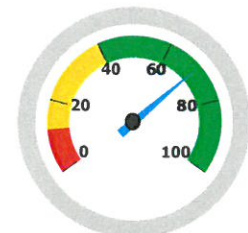


Combined Graduation Rate

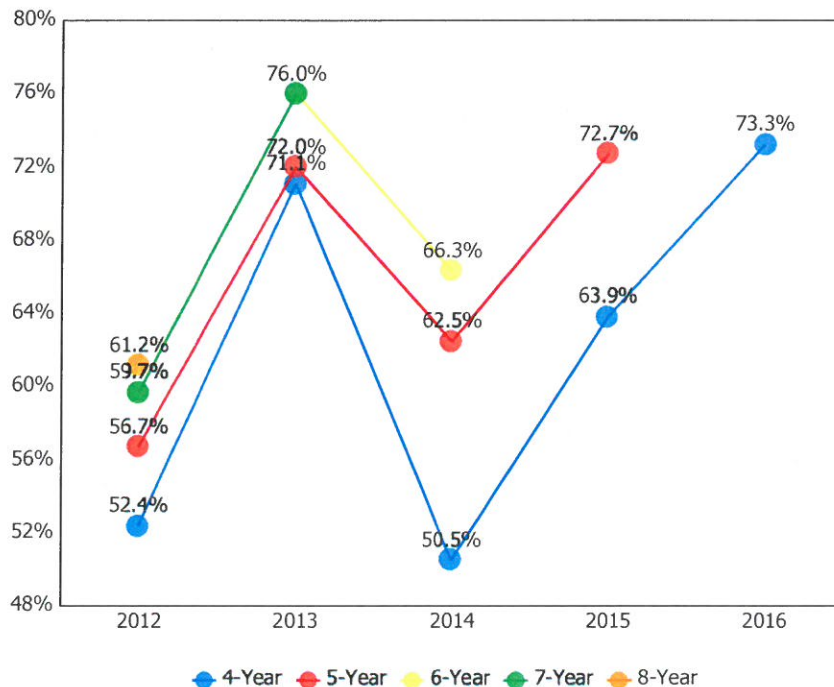
This is the weighted average of all graduation rates.

RATING
**Exceeds
Standards**
69.6%

Exceeds 40.0 - 100.0%
Meets 12.0 - 39.9%
Does Not Meet 0.0 - 11.9%

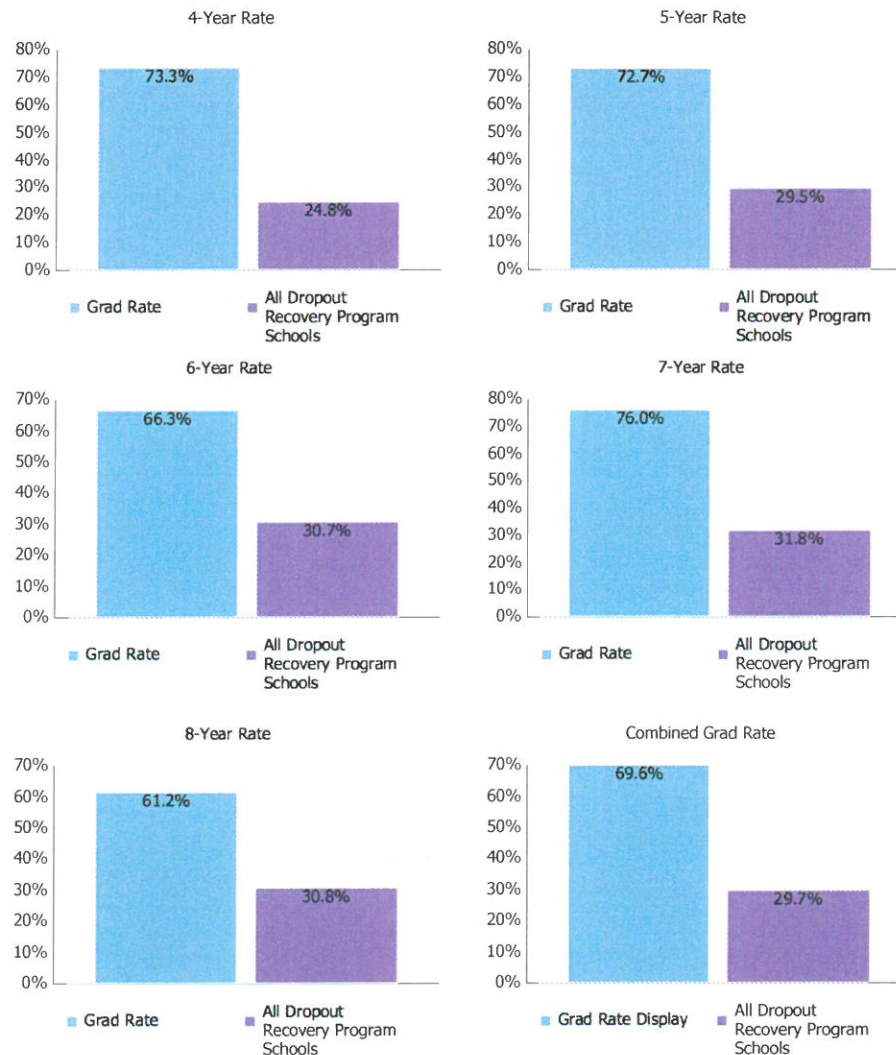


Graduation Rate Trend



Note: Because the necessary data is not yet available to calculate every graduation rate, the 6-year graduation rate does not appear in the final year of this graph; the 7-year graduation rate does not appear in the final two years; and the 8-year graduation rate does not appear in the final three years.

How Does This School Compare to the Other Dropout Recovery Schools in Ohio?



2016 - 2017 Report Card for Findlay Digital Academy

Progress



The Progress component looks closely at the growth that all students are making based on their past performances.

COMPONENT GRADE

**Meets
Standards**

GRADE

**Meets
Standards**

Overall

This measures the progress for all students in math and reading, grades 9-12 using the NWEA MAP test.

Progress Details

This table shows the Progress scores by test grade and subject, and includes up to three years of data as available.

Test Grade	Progress Score		
	Reading	Mathematics	All Tests
All Grades	1.2	0.2	0.9

Although Progress scores are not assigned letter grades at this level of detail, the grading scale applied at the Overall (All Students, All Tests) level is:

Exceeds	2.00 and up
Meets	-2.00 to 1.99
Does Not Meet	below -2.00

2016 - 2017 Report Card for Findlay Digital Academy



Principal: Lawrence J. Grove
Address: 1219 W Main Cross St Ste 101
 Findlay OH 45840-0702

Phone: (419) 425-3598
**Career Technical
 Planning District:** Millstream Career Cooperative CTPD

Directory information current as of the 2016-2017 Report Card publication date.

Your School's Students

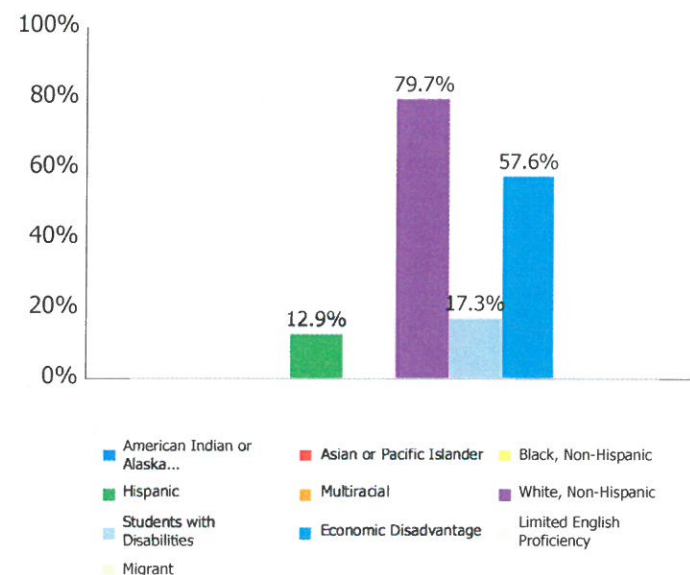
**Average
 Daily
 Enrollment:**

142

Enrollment by Subgroup

	Enrollment #	Enrollment %
Am. Indian / Alaskan Native	NC	
Asian or Pacific Islander	NC	
Black, Non-Hispanic	NC	
Hispanic	18	12.9%
Multiracial	NC	
White, Non-Hispanic	113	79.7%
Students with Disabilities	25	17.3%
Economically Disadvantaged	82	57.6%
Limited English Proficiency	NC	
Migrant	NC	

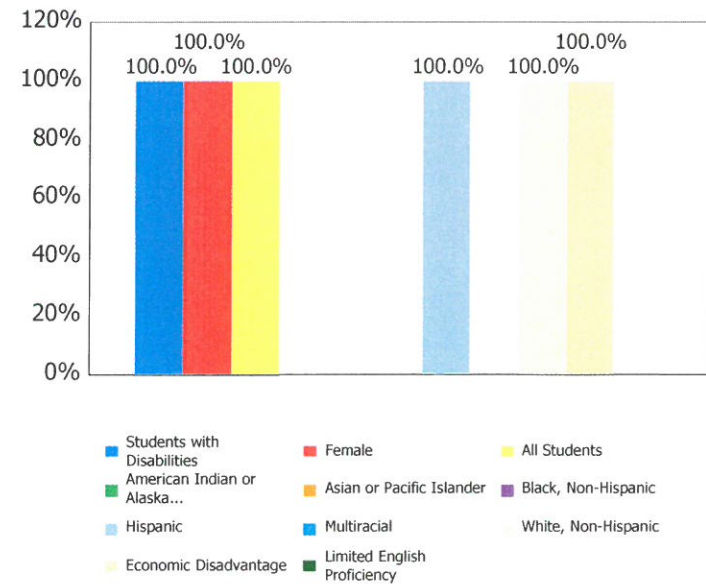
NC = Not Calculated because there are fewer than 10 in the group



Attendance Rate

All Students	100.0%
Am. Indian / Alaskan Native	NC
Asian or Pacific Islander	NC
Black, Non-Hispanic	NC
Hispanic	100.0%
Multiracial	NC
White, Non-Hispanic	100.0%
Students with Disabilities	100.0%
Economic Disadvantage	100.0%
Limited English Proficiency	NC
Migrant	NC
Male	100.0%
Female	100.0%

NC = Not Calculated because there are fewer than 10 in the group

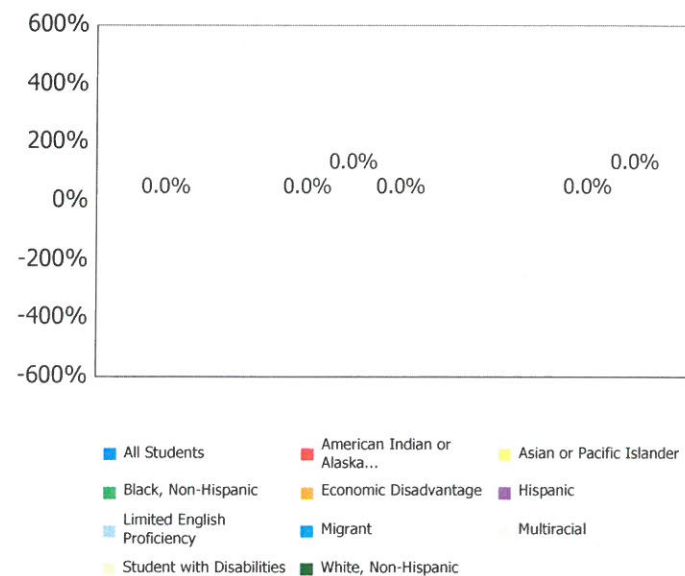


Attendance Rate is not shown if enrollment is less than 10.

Mobility Rates by Subgroup

	Student Mobility %
All Students	0.0%
Am. Indian / Alaskan Native	NC
Asian or Pacific Islander	NC
Black, Non-Hispanic	0.0%
Hispanic	0.0%
Multiracial	NC
White, Non-Hispanic	0.0%
Students with Disabilities	0.0%
Economically Disadvantaged	0.0%
Limited English Proficiency	NC
Migrant	NC

NC = Not Calculated because there are fewer than 10 in the group



This chart shows the percentage of students who, because they moved into or out of the district, did not spend a majority of the school year within the district.

Other Student Outcome Data

Denominator (Graduation Cohort for 2015
and 2016): 86

	Student #	Pct
Industry Credentials	3	1.7
Post-Secondary Credits Earned	0	0.0

