

2015 - 2016 Report Card for Findlay Digital Academy

SCHOOL RATING

Meets Standards

Location: Findlay
Administrator: Sandra H. White

*Directory information current as of the
2015-2016 Report Card publication date*

**Career Technical
Planning District:** Millstream Career
Cooperative CTPD

Enrollment: 156
Attendance Rate: 95.6%



High School Test Passage Rate

The High School Test Passage Rate component represents the number of students who passed all five state tests that are required for graduation.

Students who Passed all Five Tests..... 65.0%

RATING

**Meets
Standards**



Graduation Rate

The Graduation Rate component looks at the percent of students who are successfully finishing high school with a diploma in four, five, six, seven or eight years.

Graduation Rates

63.9% of students graduated in 4 years
62.5% of students graduated in 5 years
76.0% of students graduated in 6 years
59.7% of students graduated in 7 years
44.8% of students graduated in 8 years
60.9% is the weighted average of all graduation rates.

A graduation rate is not calculated if there are not at least 10 students in the graduating class.



Gap Closing

The Gap Closing component shows how well schools are meeting the performance expectations for our most vulnerable populations of students in English language arts, math and graduation.

Annual Measurable Objectives.....87.0

RATING

**Exceeds
Standards**

4-YEAR RATING

**Exceeds
Standards**

5-YEAR RATING

**Exceeds
Standards**

6-YEAR RATING

**Exceeds
Standards**



Progress

The Progress component looks closely at the growth that all students are making during the school year.

Value-Added

Overall.....Does Not Meet Standards

COMPONENT GRADE

**Does Not
Meet
Standards**

7-YEAR RATING

**Exceeds
Standards**

8-YEAR RATING

**Exceeds
Standards**

COMBINED RATING

**Exceeds
Standards**

High School Test Passage Rate

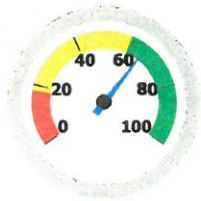


The High School Test Passage Rate component represents the number of students who passed all five state tests that are required for graduation.

Students Who Passed All Five Tests

RATING

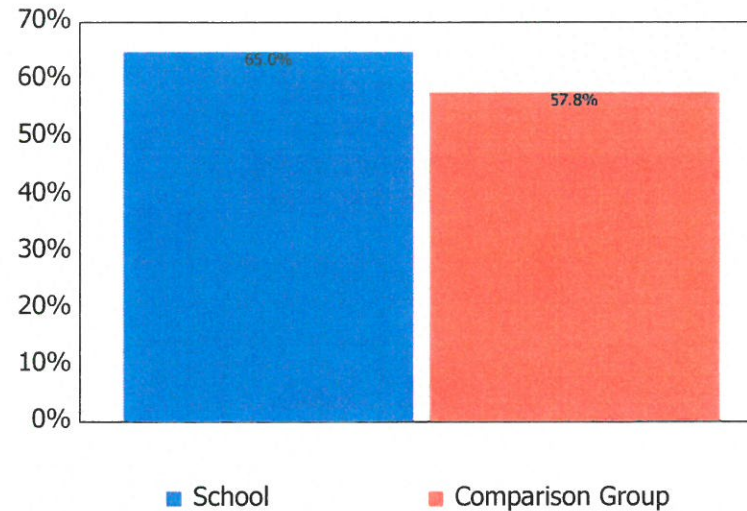
**Meets
Standards**



65.0%

| | |
|-------------------------|---------------|
| Exceeds Standards | 68.0 - 100.0% |
| Meets Standards | 32.0 - 67.9% |
| Does Not Meet Standards | 0.0 - 31.9% |

How Does This School Compare to the Other Dropout Recovery Program Schools in Ohio?



Gap Closing

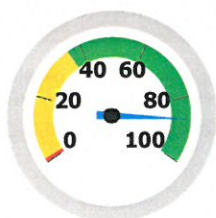


The Gap Closing component shows how well schools are meeting the performance expectations for our most vulnerable populations of students in English language arts, math and graduation.

GRADE

Exceeds Standards

AMO Points



87.0%

Exceeds Standards 36.0 - 100.0%
Meets Standards 1.0 - 35.9%
Does Not Meet Standards 0.0 - 0.9%

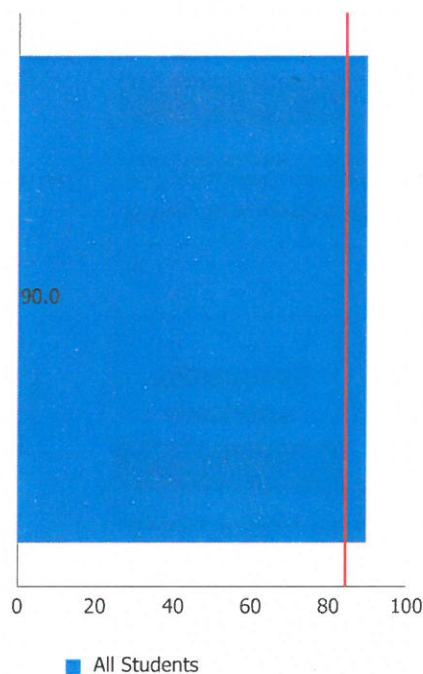
Annual Measurable Objectives

Annual Measurable Objectives (AMOs) compare the performance of all students to a state goal which is displayed as the red line in the following charts. These charts show how well each group achieves that goal in ELA, math and graduation – and emphasize any achievement gaps that exist between groups. The ultimate goal is for all groups to achieve at high levels.

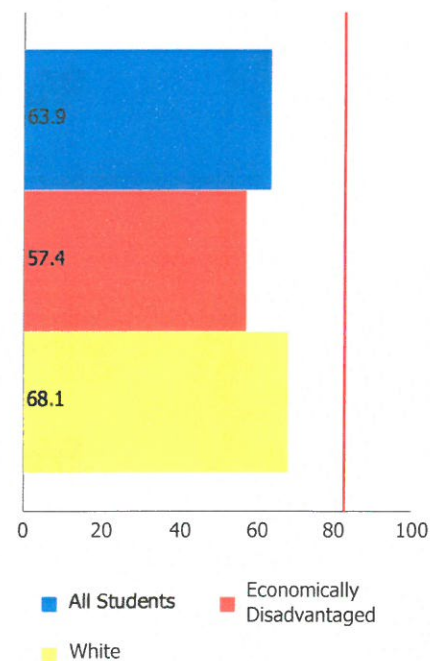
English Language Arts



Math



Graduation Rate



The red line on each graph identifies the Annual Measurable Objective. The 2016 AMO for ELA is 87.9%, for Math is 84.5%, and for Graduation Rate is 82.8%. Subgroups with fewer than 30 students are not rated and do not appear on the graphs.

Graduation Rate



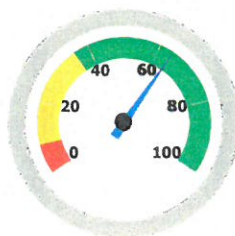
The Graduation Rate component looks at the percent of students who are successfully finishing high school with a diploma in four, five, six, seven or eight years.

4-Year Graduation Rate

The 4-year graduation rate applies to the Class of 2015 who graduated within four years, i.e. students who entered the 9th grade in 2012 and graduated by 2015.

RATING
**Exceeds
Standards**
63.9%

Exceeds 36.0 - 100.0%
Meets 8.0 - 35.9%
Does Not Meet 0.0 - 7.9%

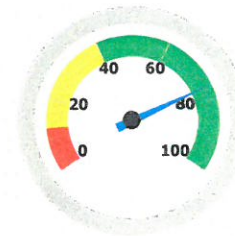


6-Year Graduation Rate

The 6-year graduation rate applies to the Class of 2013 who graduated within six years, i.e. students who entered the 9th grade in 2010 and graduated by 2015.

RATING
**Exceeds
Standards**
76.0%

Exceeds 40.0 - 100.0%
Meets 12.0 - 39.9%
Does Not Meet 0.0 - 11.9%

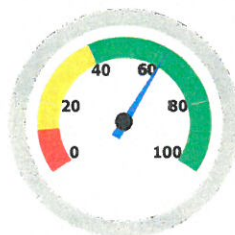


5-Year Graduation Rate

The 5-year graduation rate applies to the Class of 2014 who graduated within five years, i.e. students who entered the 9th grade in 2011 and graduated by 2015.

RATING
**Exceeds
Standards**
62.5%

Exceeds 40.0 - 100.0%
Meets 12.0 - 39.9%
Does Not Meet 0.0 - 11.9%

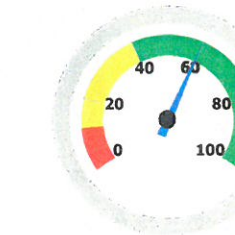


7-Year Graduation Rate

The 7-year graduation rate applies to the Class of 2012 who graduated within seven years, i.e. students who entered the 9th grade in 2009 and graduated by 2015.

RATING
**Exceeds
Standards**
59.7%

Exceeds 40.0 - 100.0%
Meets 12.0 - 39.9%
Does Not Meet 0.0 - 11.9%

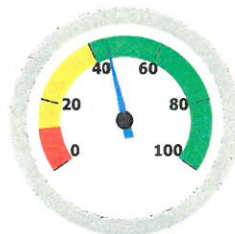


8-Year Graduation Rate

The 8-year graduation rate applies to the Class of 2011 who graduated within eight years, i.e. students who entered the 9th grade in 2008 and graduated by 2015.

RATING
**Exceeds
Standards**
44.8%

Exceeds 40.0 - 100.0%
Meets 12.0 - 39.9%
Does Not Meet 0.0 - 11.9%

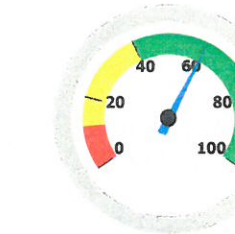


Combined Graduation Rate

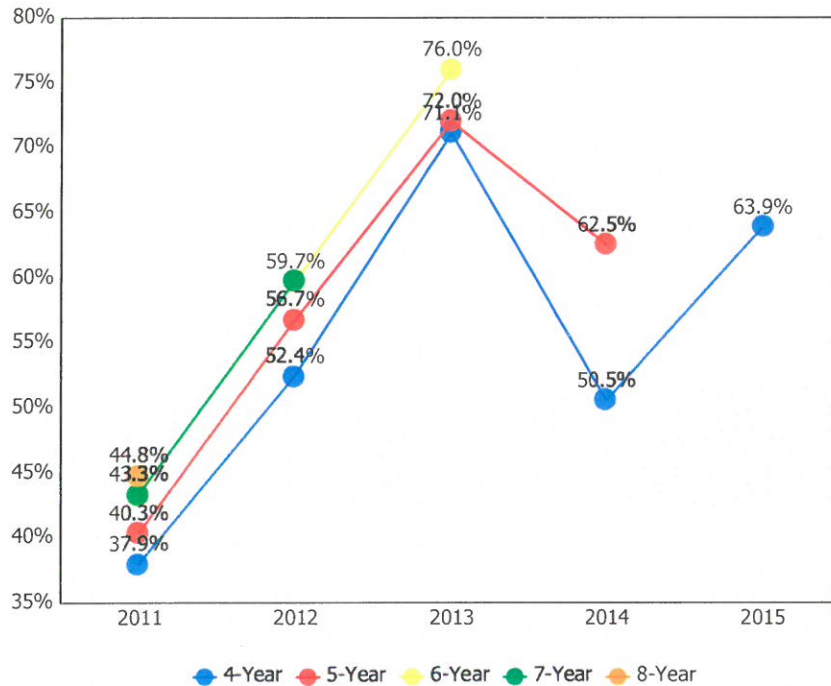
This is the weighted average of all graduation rates.

RATING
**Exceeds
Standards**
60.9%

Exceeds 40.0 - 100.0%
Meets 12.0 - 39.9%
Does Not Meet 0.0 - 11.9%

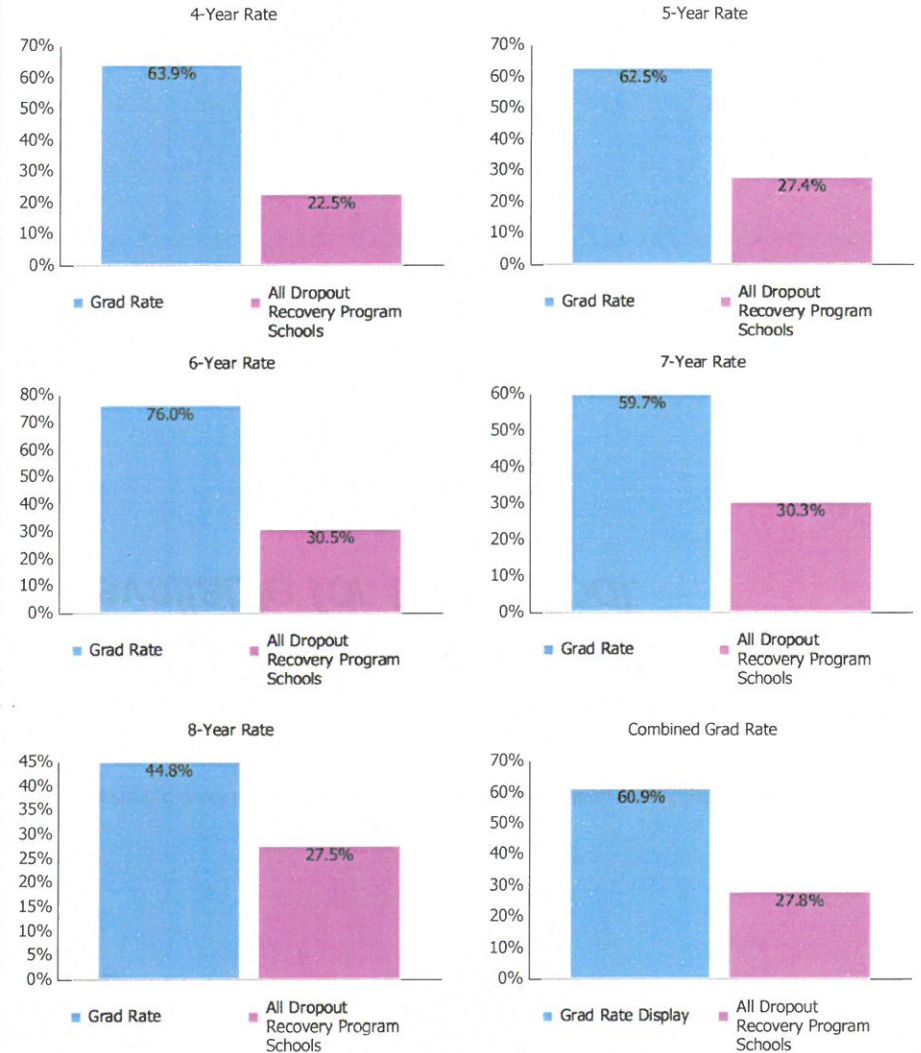


Graduation Rate Trend



Note: Because the necessary data is not yet available to calculate every graduation rate, the 6-year graduation rate does not appear in the final year of this graph; the 7-year graduation rate does not appear in the final two years; and the 8-year graduation rate does not appear in the final three years.

How Does This School Compare to the Other Dropout Recovery Schools in Ohio?



2015 - 2016 Report Card for Findlay Digital Academy

Progress



The Progress component looks closely at the growth that all students are making based on their past performances.

COMPONENT GRADE

**Does Not Meet
Standards**

GRADE

**Does Not Meet
Standards**

Overall

This measures the progress for all students in math and reading, grades 9-12 using the NWEA MAP test.

Progress Details

This table shows the Progress scores by test grade and subject, and includes up to three years of data as available.

*Value Added Data is not
available for this school.*

2015 - 2016 Report Card for Findlay Digital Academy



Principal: Lawrence J. Grove
Address: 1219 W Main Cross St Ste 101
 Findlay OH 45840-0702

Phone: (419) 425-3598

**Career Technical
 Planning District:** Millstream Career Cooperative CTPD

Directory information current as of the 2015-2016 Report Card publication date.

Your School's Students

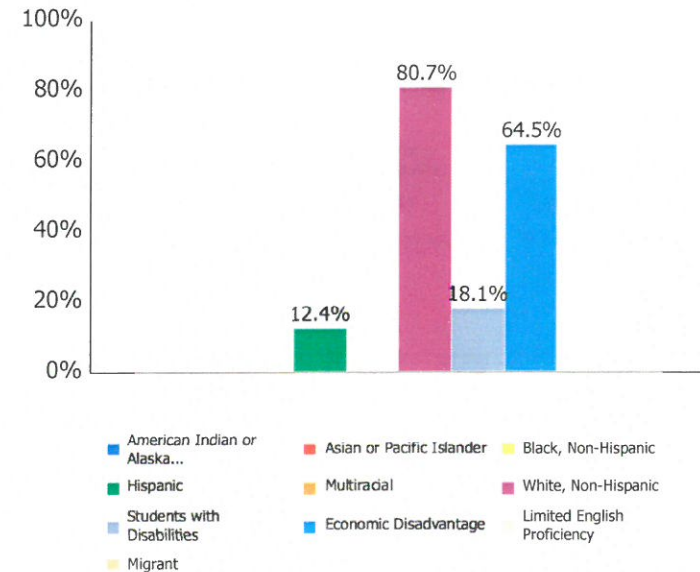
**Average
 Daily
 Enrollment:**

156

Enrollment by Subgroup

| | Enrollment # | Enrollment % |
|------------------------------------|--------------|--------------|
| Am. Indian / Alaskan Native | NC | |
| Asian or Pacific Islander | NC | |
| Black, Non-Hispanic | NC | |
| Hispanic | 19 | 12.4% |
| Multiracial | NC | |
| White, Non-Hispanic | 126 | 80.7% |
| Students with Disabilities | 28 | 18.1% |
| Economically Disadvantaged | 100 | 64.5% |
| Limited English Proficiency | NC | |
| Migrant | NC | |

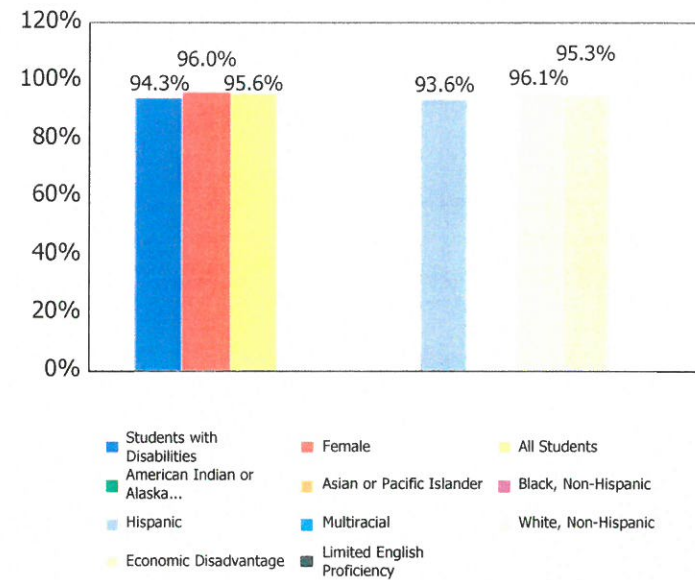
NC = Not Calculated because there are fewer than 10 in the group



Attendance Rate

| | |
|------------------------------------|-------|
| All Students | 95.6% |
| Am. Indian / Alaskan Native | NC |
| Asian or Pacific Islander | NC |
| Black, Non-Hispanic | NC |
| Hispanic | 93.6% |
| Multiracial | NC |
| White, Non-Hispanic | 96.1% |
| Students with Disabilities | 94.3% |
| Economic Disadvantage | 95.3% |
| Limited English Proficiency | NC |
| Migrant | NC |
| Male | 95.1% |
| Female | 96.0% |

NC = Not Calculated because there are fewer than 10 in the group

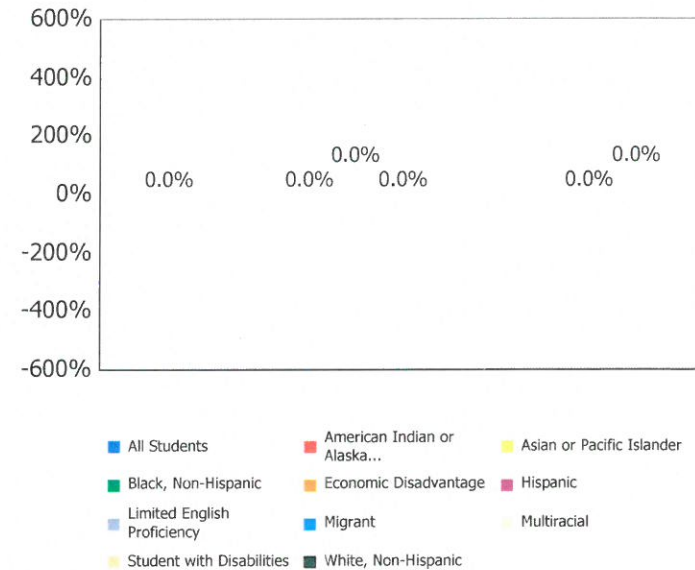


Attendance Rate is not shown if enrollment is less than 10.

Mobility Rates by Subgroup

| | Student Mobility % |
|-----------------------------|--------------------|
| All Students | 0.0% |
| Am. Indian / Alaskan Native | NC |
| Asian or Pacific Islander | NC |
| Black, Non-Hispanic | 0.0% |
| Hispanic | 0.0% |
| Multiracial | NC |
| White, Non-Hispanic | 0.0% |
| Students with Disabilities | 0.0% |
| Economically Disadvantaged | 0.0% |
| Limited English Proficiency | NC |
| Migrant | NC |

NC = Not Calculated because there are fewer than 10 in the group



This chart shows the percentage of students who, because they moved into or out of the district, did not spend a majority of the school year within the district.

Other Student Outcome Data

Denominator (Graduation Cohort for 2014 and 2015): 83

| | Student # | Pct |
|-------------------------------|-----------|-----|
| Industry Credentials | 4 | 1.8 |
| Post-Secondary Credits Earned | 0 | 0.0 |

