

# 2014 - 2015 Report Card for Findlay Digital Academy

## SCHOOL RATING

**Meets Standards**

**Location:** Findlay  
**Administrator:** Sandra H. White

*Directory information current as of the  
2014-2015 Report Card publication date*

**Career Technical  
Planning District:** Millstream Career  
Cooperative CTPD

**Enrollment:** 133  
**Attendance Rate:** 96.3%



### High School Test Passage Rate

This rating answers the question – How many students in your school passed all five state tests that are required for graduation?

Students who Passed all Five Tests..... 57.9%

#### RATING

**Meets  
Standards**



### Graduation Rate

This rating answers the question – How many students from your school graduate in four, five, six, or seven years?

#### Graduation Rates

50.5% of students graduated in 4 years  
72.0% of students graduated in 5 years  
59.7% of students graduated in 6 years  
43.3% of students graduated in 7 years  
40.4% of students graduated in 8 years  
52.4% is the weighted average of all graduation rates.

*A graduation rate is not calculated if there are not at least 10 students in the graduating class.*



### Gap Closing

This rating shows how well all students are doing in your school in reading, math, and graduation. It answers the question – Is every student succeeding, regardless of income, race, ethnicity, or disability?

Annual Measurable Objectives.....17.3

#### RATING

**Meets  
Standards**

#### 4-YEAR RATING

**Exceeds  
Standards**

#### 5-YEAR RATING

**Exceeds  
Standards**

#### 6-YEAR RATING

**Exceeds  
Standards**



### Progress

This is your school's average progress for its students in math and reading, using the NWEA Measure of Academic Progress (MAP) test in grades 9-12. It looks at how much students learn in a year. It answers the question – Did the students get a year's worth of growth? Did they get more? Did they get less?

#### Value-Added

Overall .....Meets Standards

#### COMPONENT GRADE

**Meets  
Standards**

#### 7-YEAR RATING

**Exceeds  
Standards**

#### 8-YEAR RATING

**Exceeds  
Standards**

#### COMBINED RATING

**Exceeds  
Standards**

## High School Test Passage Rate

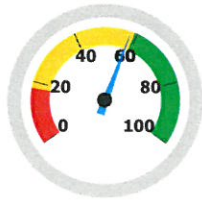


This rating answers the question – How many students in your school passed all five state tests that are required for graduation?

### Students Who Passed All Five Tests

RATING

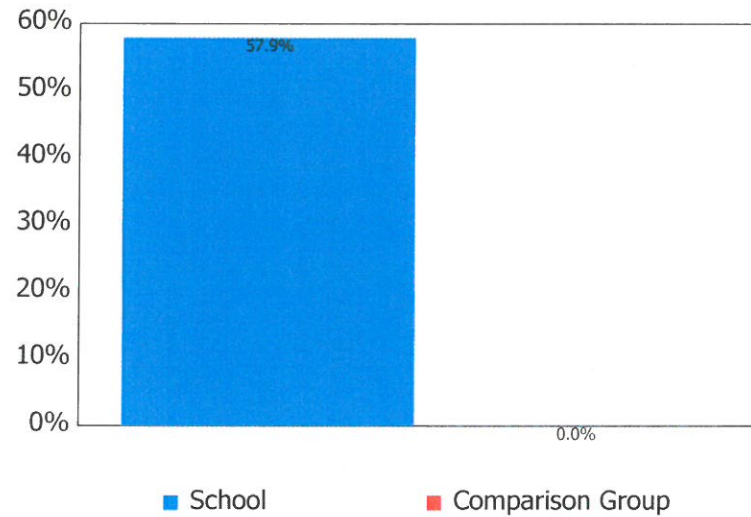
**Meets  
Standards**



**57.9%**

Exceeds Standards	68.0 - 100.0%
Meets Standards	32.0 - 67.9%
Does Not Meet Standards	0.0 - 31.9%

### How Does This School Compare to the Other Dropout Recovery Program Schools in Ohio?



## Gap Closing

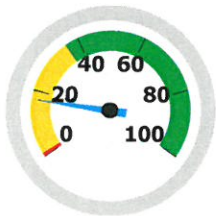


This rating shows how well all students are doing in your school in reading, math, and graduation. It answers the question – Is every student succeeding, regardless of income, race, ethnicity, or disability?

GRADE

**Meets Standards**

AMO Points



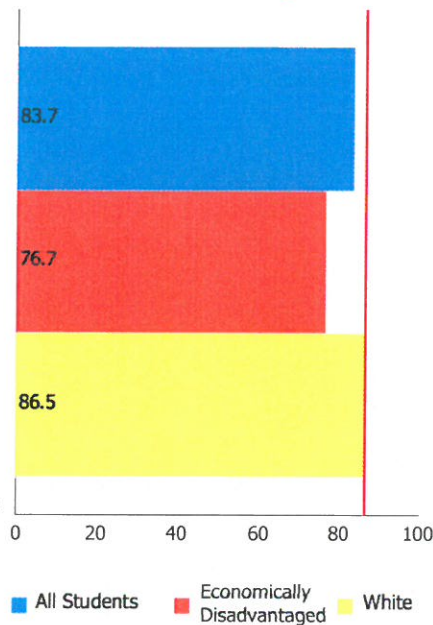
**17.3%**

Exceeds Standards 36.0 - 100.0%  
Meets Standards 1.0 - 35.9%  
Does Not Meet Standards 0.0 - 0.9%

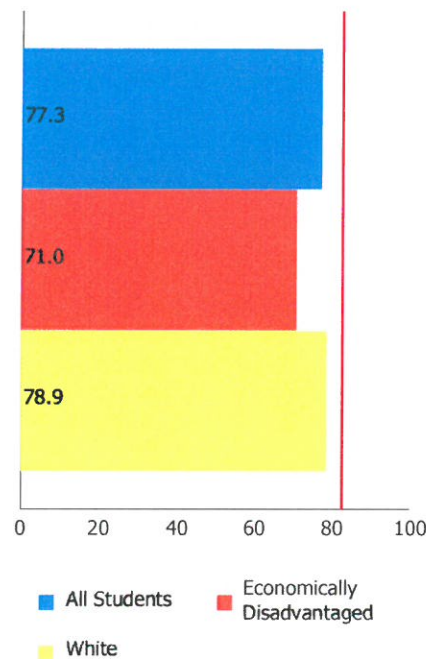
### Annual Measurable Objectives

Annual Measurable Objectives (AMOs) compare the performance of all students to a state goal which is displayed as the red line in the following charts. These charts show how well each group achieves that goal in reading, math and graduation – and emphasize any achievement gaps that exist between groups. The ultimate goal is for all groups to achieve at high levels.

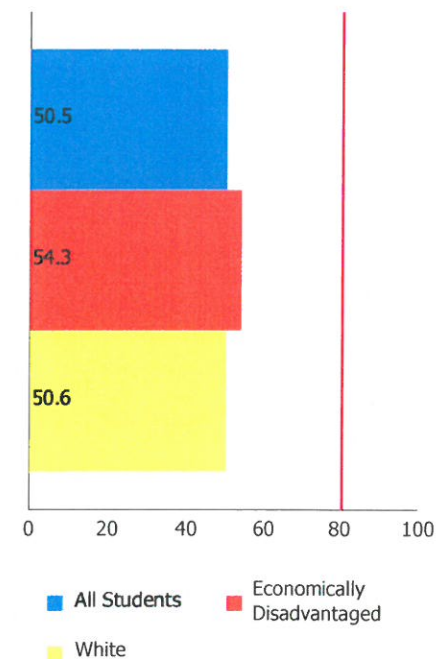
#### Reading



#### Math



#### Graduation Rate



The red line on each graph identifies the Annual Measurable Objective. The 2015 AMO for Reading is 86.4%, for Math is 82.5%, and for Graduation Rate is 80.5%. Subgroups with fewer than 30 students are not rated and do not appear on the graphs.



## Graduation Rate



This rating answers the question – How many students from your school graduate in four, five, six, or seven years?

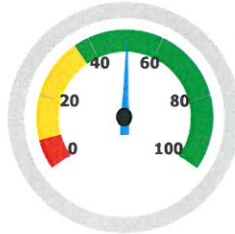
Directory information current as of the  
2014-2015 Report Card publication date

### 4-Year Graduation Rate

The 4-year graduation rate applies to the Class of 2014 who graduated within four years, i.e. students who entered the 9th grade in 2011 and graduated by 2014.

**RATING**
**Exceeds  
Standards**
**50.5%**

Exceeds 36.0 - 100.0%  
Meets 8.0 - 35.9%  
Does Not Meet 0.0 - 7.9%

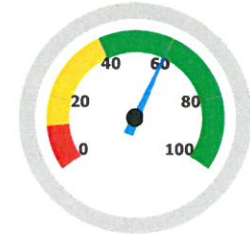


### 6-Year Graduation Rate

The 6-year graduation rate applies to the Class of 2012 who graduated within six years, i.e. students who entered the 9th grade in 2009 and graduated by 2014.

**RATING**
**Exceeds  
Standards**
**59.7%**

Exceeds 40.0 - 100.0%  
Meets 12.0 - 39.9%  
Does Not Meet 0.0 - 11.9%

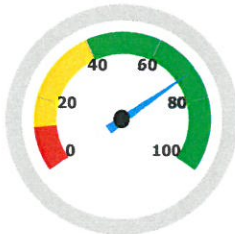


### 5-Year Graduation Rate

The 5-year graduation rate applies to the Class of 2013 who graduated within five years, i.e. students who entered the 9th grade in 2010 and graduated by 2014.

**RATING**
**Exceeds  
Standards**
**72.0%**

Exceeds 40.0 - 100.0%  
Meets 12.0 - 39.9%  
Does Not Meet 0.0 - 11.9%

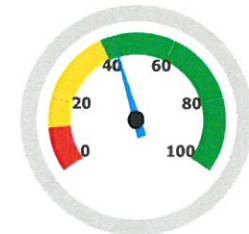


### 7-Year Graduation Rate

The 7-year graduation rate applies to the Class of 2011 who graduated within seven years, i.e. students who entered the 9th grade in 2008 and graduated by 2014.

**RATING**
**Exceeds  
Standards**
**43.3%**

Exceeds 40.0 - 100.0%  
Meets 12.0 - 39.9%  
Does Not Meet 0.0 - 11.9%

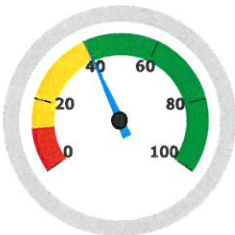


### 8-Year Graduation Rate

The 8-year graduation rate applies to the Class of 2010 who graduated within eight years, i.e. students who entered the 9th grade in 2007 and graduated by 2014.

**RATING**
**Exceeds  
Standards**
**40.4%**

Exceeds 40.0 - 100.0%  
Meets 12.0 - 39.9%  
Does Not Meet 0.0 - 11.9%

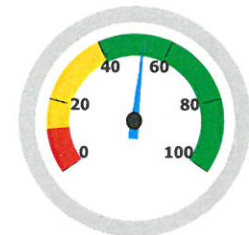


### Combined Graduation Rate

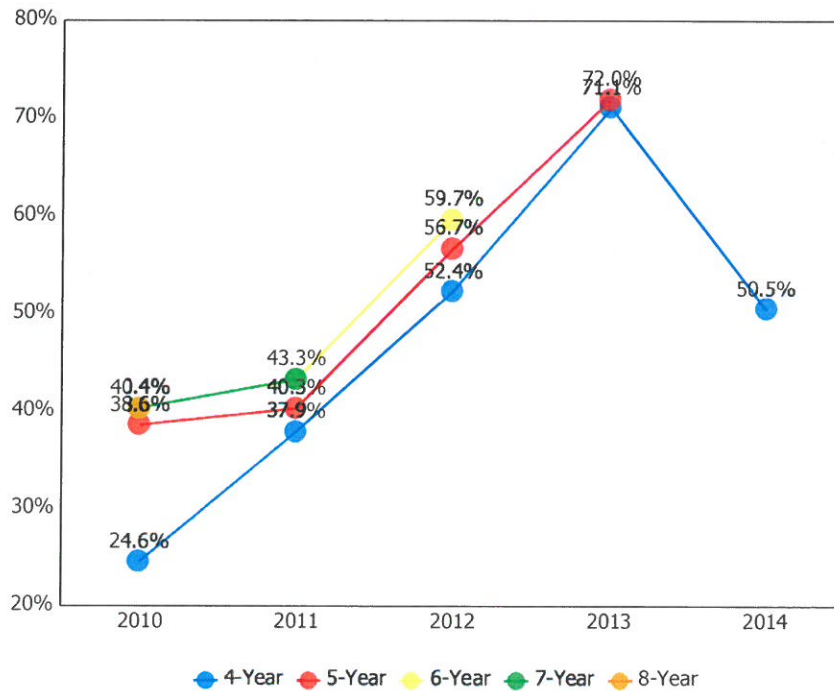
This is the weighted average of all graduation rates.

**RATING**
**Exceeds  
Standards**
**52.4%**

Exceeds 40.0 - 100.0%  
Meets 12.0 - 39.9%  
Does Not Meet 0.0 - 11.9%

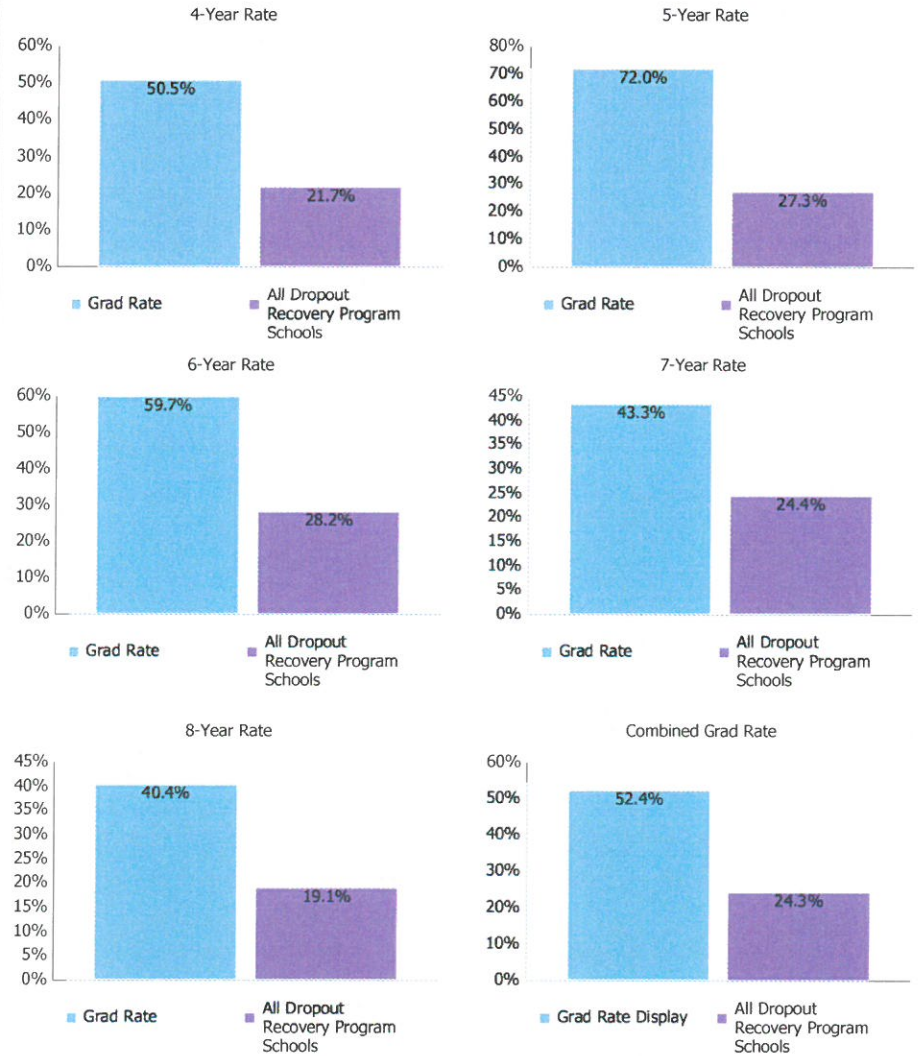


### Graduation Rate Trend



Note: Because the necessary data is not yet available to calculate every graduation rate, the 5-year graduation rate does not appear in the final year of this graph; the 6-year graduation rate does not appear in the final two years; the 7-year graduation rate does not appear in the final three years; and the 8-year graduation rate does not appear in the final four years.

### How Does This School Compare to the Other Dropout Recovery Schools in Ohio?



## Progress



This is your school's average progress for its students in math and reading, using the NWEA Measure of Academic Progress (MAP) test in grades 9-12. It looks at how much students learn in a year. It answers the question – Did the students get a year's worth of growth? Did they get more? Did they get less?

### COMPONENT GRADE

**Meets  
Standards**

### GRADE

**Meets  
Standards**

### Overall

This measures the progress for all students in math and reading, grades 9-12 using the NWEA MAP test.

### Progress Details

This table shows the Progress scores by test grade and subject, and includes up to three years of data as available.

Test Grade	Progress Score		
	Reading	Mathematics	All Tests
All Grades	-0.1	-3.0	-1.7

Although Progress scores are not assigned letter grades at this level of detail, the grading scale applied at the Overall (All Students, All Tests) level is:

Exceeds	2.00 and up
Meets	-2.00 to 1.99
Does Not Meet	below -2.00





**Principal:** Lawrence J. Grove

**Address:** 1219 W Main Cross St Ste 101  
Findlay OH 45840-0702

**Phone:** (419) 425-3598

**Career Technical  
Planning District:** Millstream Career Cooperative CTPD

*Directory information current as of the 2014-2015 Report Card publication date.*

## Your School's Students

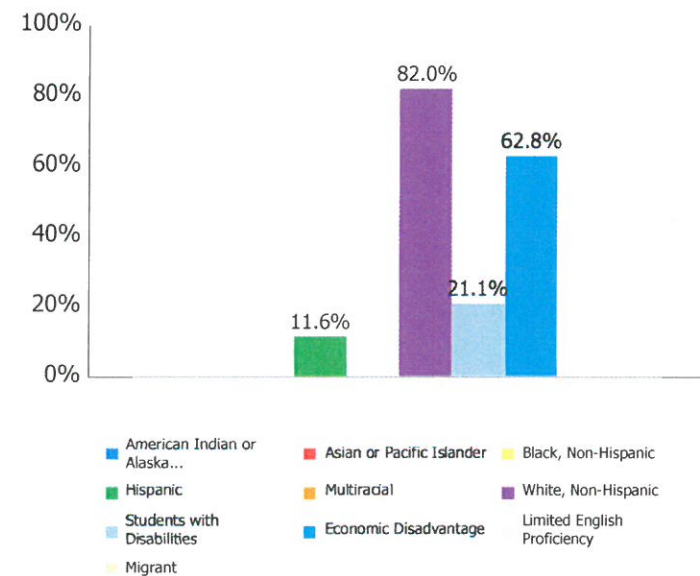
**Average  
Daily  
Enrollment:**

**133**

## Enrollment by Subgroup

	Enrollment #	Enrollment %
Am. Indian / Alaskan Native	NC	
Asian or Pacific Islander	NC	
Black, Non-Hispanic	NC	
Hispanic	15	11.6%
Multiracial	NC	
White, Non-Hispanic	109	82.0%
Students with Disabilities	28	21.1%
Economically Disadvantaged	84	62.8%
Limited English Proficiency	NC	
Migrant	NC	

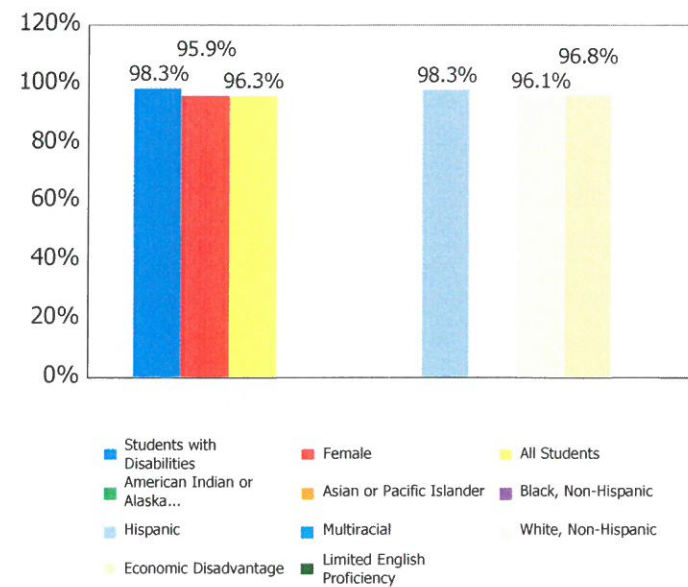
NC = Not Calculated because there are fewer than 10 in the group



### Attendance Rate

<b>All Students</b>	96.3%
<b>Am. Indian / Alaskan Native</b>	NC
<b>Asian or Pacific Islander</b>	NC
<b>Black, Non-Hispanic</b>	NC
<b>Hispanic</b>	98.3%
<b>Multiracial</b>	NC
<b>White, Non-Hispanic</b>	96.1%
<b>Students with Disabilities</b>	98.3%
<b>Economic Disadvantage</b>	96.8%
<b>Limited English Proficiency</b>	NC
<b>Migrant</b>	NC
<b>Male</b>	97.0%
<b>Female</b>	95.9%

NC = Not Calculated because there are fewer than 10 in the group



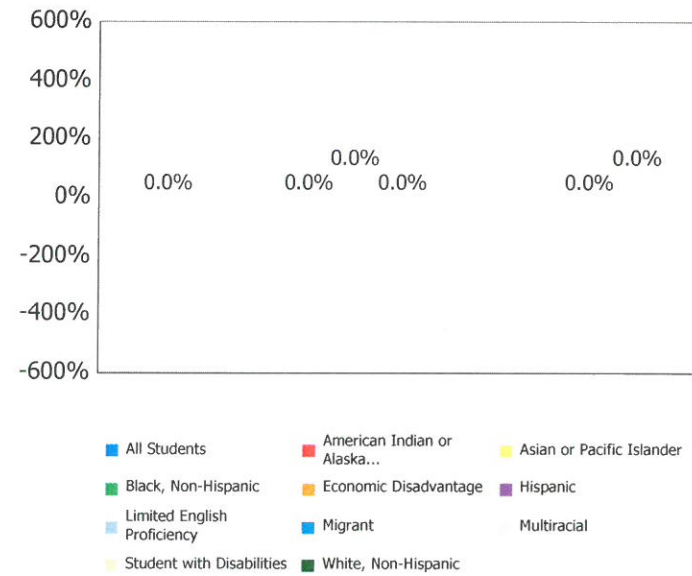
Attendance Rate is not shown if enrollment is less than 10.



### Mobility Rates by Subgroup

	Student Mobility %
<b>All Students</b>	0.0%
<b>Am. Indian / Alaskan Native</b>	NC
<b>Asian or Pacific Islander</b>	NC
<b>Black, Non-Hispanic</b>	0.0%
<b>Hispanic</b>	0.0%
<b>Multiracial</b>	NC
<b>White, Non-Hispanic</b>	0.0%
<b>Students with Disabilities</b>	0.0%
<b>Economically Disadvantaged</b>	0.0%
<b>Limited English Proficiency</b>	NC
<b>Migrant</b>	NC

NC = Not Calculated because there are fewer than 10 in the group



This chart shows the percentage of students who, because they moved into or out of the district, did not spend a majority of the school year within the district.

Other Student Outcome Data

Denominator (Graduation Cohort for 2014): 99

	Student #	Pct
Industry Credentials	0	0.0
Post-Secondary Credits Earned	0	0.0

