

2012-2013 Report Card for Findlay Digital Academy

SCHOOL RATING

Coming in
2015

Location: Findlay
Administrator: Sandra H. White



High School Assessment Test Passage Rate

This rating answers the question – How many students in your school passed all five state tests that are required for graduation?

Students who Passed all Five Tests..... 82.4%

RATING

Coming in
2014



Gap Closing

This rating shows how well all students are doing in your school in reading, math, and graduation. It answers the question – Is every student succeeding, regardless of income, race, culture or disability?

Annual Measurable Objectives.....67.6

RATING

Coming in
2014



Graduation Rate

This rating answers the question – How many students from your school graduate in four, five, or six years?

Graduation Rates

52.4% of students graduated in 4 years
40.3% of students graduated in 5 years
40.4% of students graduated in 6 years

4-YEAR RATING

Coming in
2014

5-YEAR RATING

Coming in
2014

6-YEAR RATING

Coming in
2014

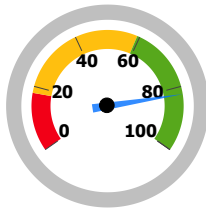
High School Assessment Test Passage Rate



This rating answers the question – How many students in your school passed all five state tests that are required for graduation?

Students who Passed All Five Tests

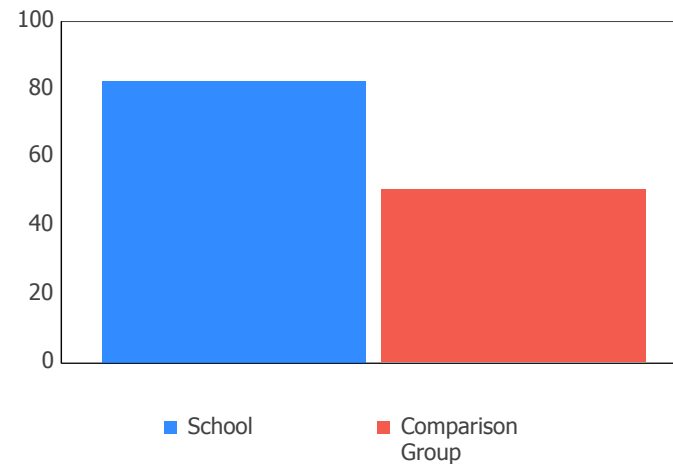
RATING
Coming in
2014



82.4%

A rating of Exceeds Standards, Meets Standards, or Does Not Meet Standards will be applied to this score in 2014.

How does this school compare to the other Dropout Recovery Program schools in the state?



Gap Closing

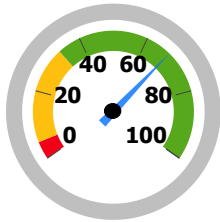


This rating shows how well all students are doing in your school in reading, math, and graduation. It answers the question – Is every student succeeding, regardless of income, race, culture or disability?

GRADE

Coming in
2014

AMO Points

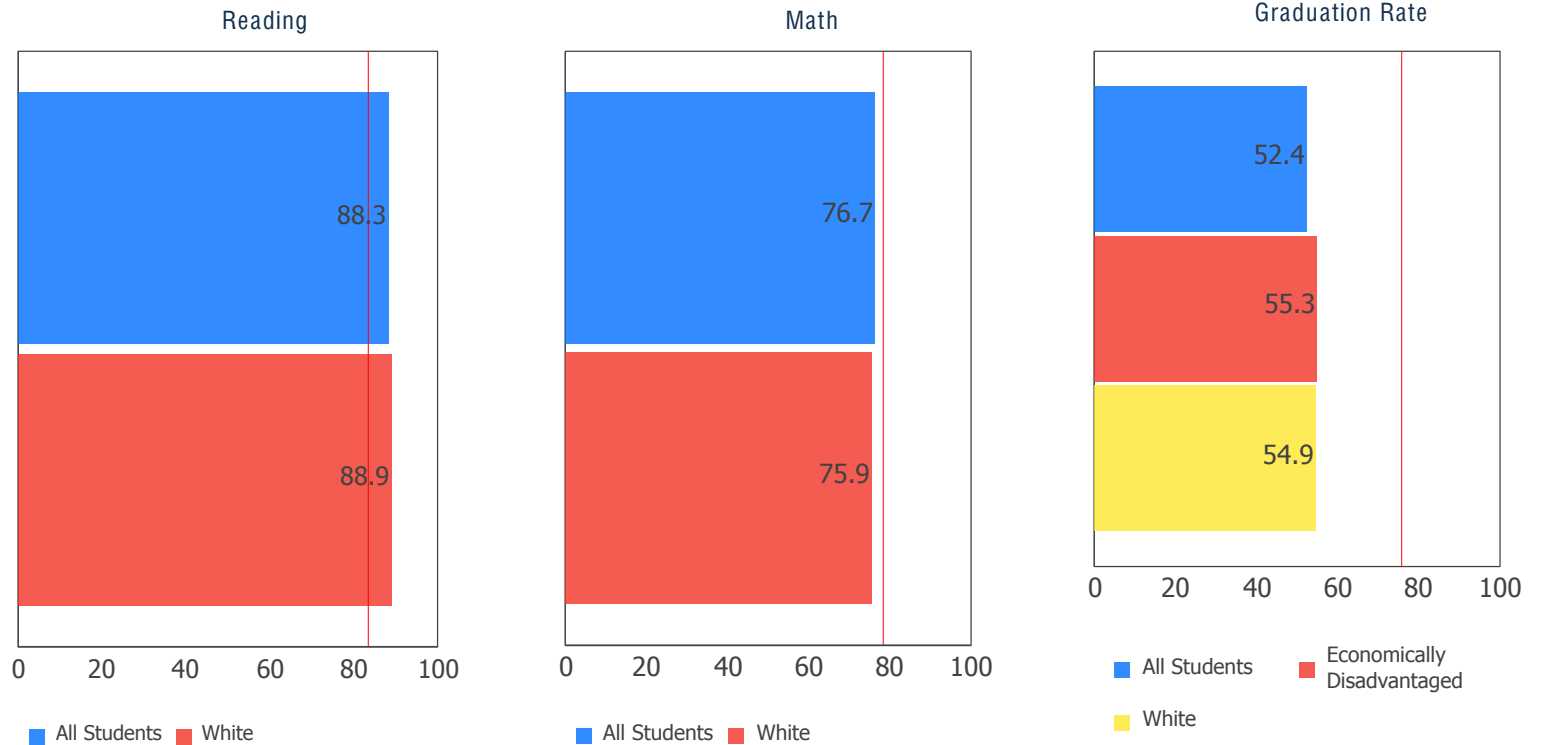


67.6%

A rating of Exceeds Standards, Meets Standards, or Does Not Meet Standards will be applied to this score in 2014.

Annual Measurable Objectives

Annual Measurable Objectives (AMOs) compare the performance of all students to a state goal which is displayed as the red line in the following charts. These charts show how well each group achieves that goal in reading, math and graduation – and emphasize any achievement gaps that exist between groups. The ultimate goal is for all groups to achieve at high levels.



The red line on each graph identifies the Annual Measurable Objective. The 2013 AMO for Reading is 83.4%, for Math is 78.5%, and for Graduation Rate is 75.9%. Subgroups with fewer than 30 students are not rated and do not appear on the graphs.

Graduation Rate



This rating answers the question – How many students from your school graduate in four, five, or six years?

4-Year Graduation Rate

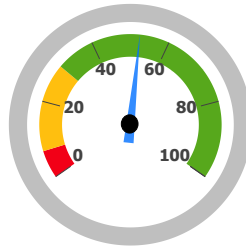
The 4-year graduation rate applies to the Class of 2012 who graduated within four years, i.e. students who entered the 9th grade in 2009 and graduated by 2012.

RATING

Coming in
2014

52.4%

A rating of Exceeds Standards, Meets Standards, or Does Not Meet Standards will be applied to this score in 2014.



5-Year Graduation Rate

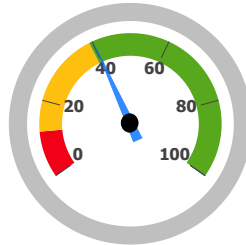
The 5-year graduation rate applies to the Class of 2011 who graduated within five years, i.e. students who entered the 9th grade in 2008 and graduated by 2012.

RATING

Coming in
2014

40.3%

A rating of Exceeds Standards, Meets Standards, or Does Not Meet Standards will be applied to this score in 2014.



6-Year Graduation Rate

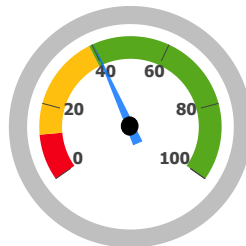
The 6-year graduation rate applies to the Class of 2010 who graduated within five years, i.e. students who entered the 9th grade in 2007 and graduated by 2012.

RATING

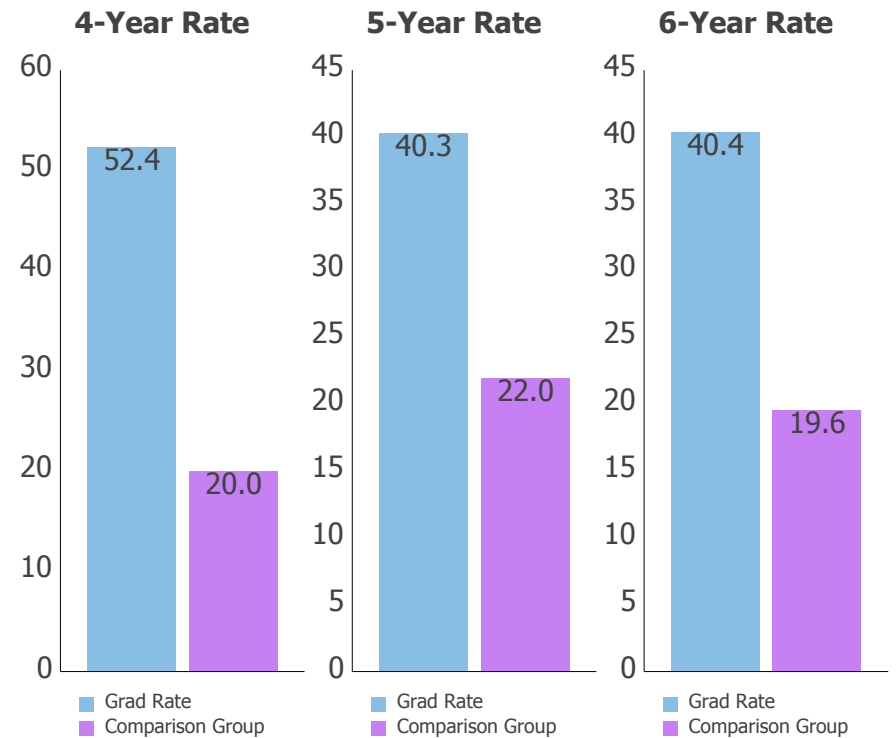
Coming in
2014

40.4%

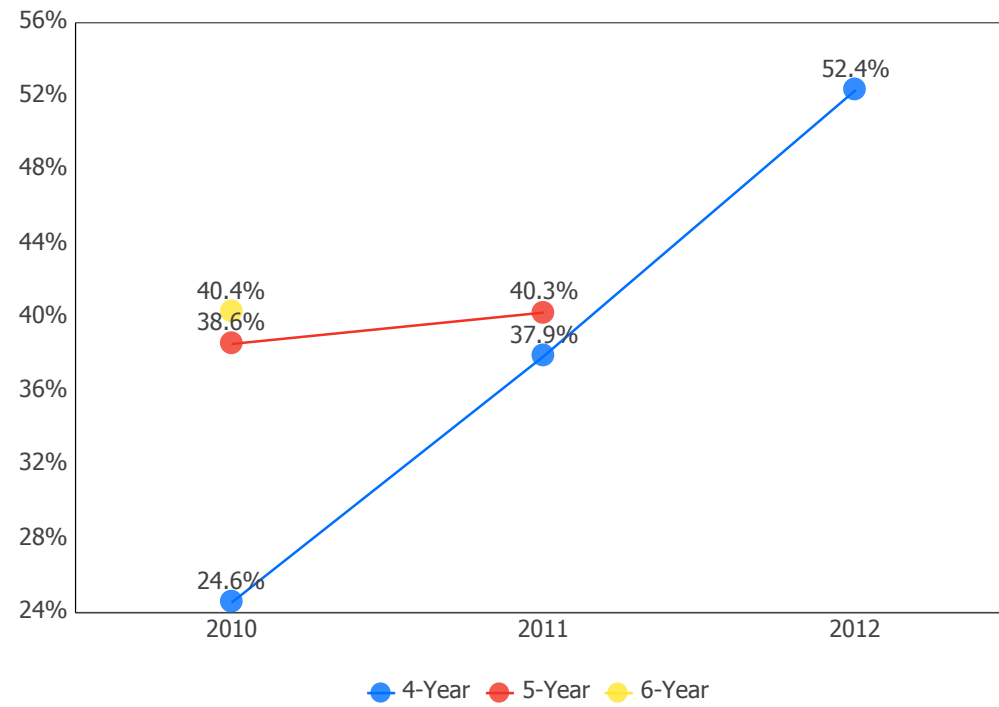
A rating of Exceeds Standards, Meets Standards, or Does Not Meet Standards will be applied to this score in 2014.



How does this school compare to the other dropout recovery schools in the state?



Graduation Rate Trend



Note: The 5-year graduation rate does not appear in the final year of this graph, and the 6-year graduation rate does not appear in the final two years, because the necessary data is not yet available to calculate the 5-year and 6-year rates for those school years.