

**SCHOOL RATING**  
Coming in  
**2015**

Location: Findlay  
Administrator: Sandra H. White

Directory information current as of the  
2013-2014 Report Card publication date

Enrollment: 159  
Attendance Rate: 93.8%



**High School Test Passage Rate**

This rating answers the question – How many students in your school passed all five state tests that are required for graduation?

**RATING**  
Exceeds  
Standards

Students who Passed all Five Tests..... 74.2%



**Gap Closing**

This rating shows how well all students are doing in your school in reading, math, and graduation. It answers the question – Is every student succeeding, regardless of income, race, ethnicity, or disability?

**RATING**  
Exceeds  
Standards

Annual Measurable Objectives.....83.3



**Graduation Rate**

This rating answers the question – How many students from your school graduate in four, five, six, or seven years?

**Graduation Rates**

- 71.1% of students graduated in 4 years
- 56.7% of students graduated in 5 years
- 43.3% of students graduated in 6 years
- 40.4% of students graduated in 7 years

**4-YEAR RATING**  
Exceeds  
Standards

**5-YEAR RATING**  
Exceeds  
Standards

**6-YEAR RATING**  
Exceeds  
Standards

**7-YEAR RATING**  
Exceeds  
Standards

## High School Test Passage Rate

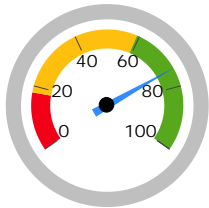


This rating answers the question – How many students in your school passed all five state tests that are required for graduation?

### Students Who Passed All Five Tests

RATING

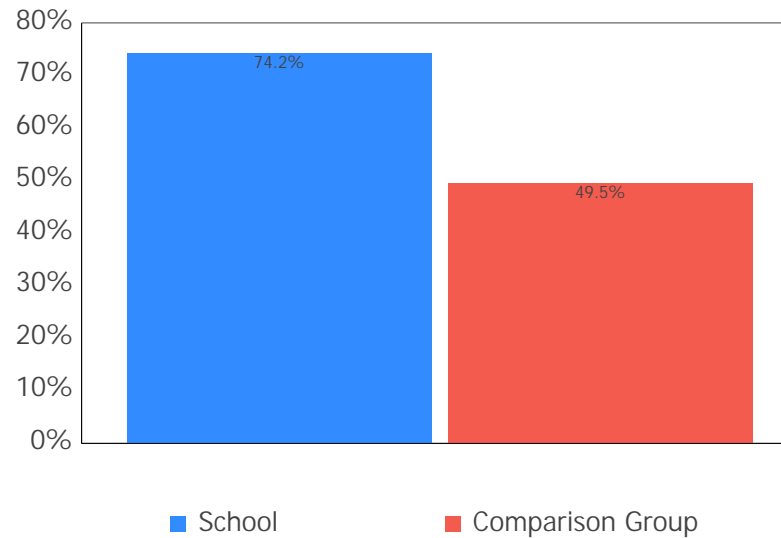
**Exceeds Standards**



74.2%

Exceeds Standards	59.0 - 100.0%
Meets Standards	18.0 - 58.9%
Does Not Meet Standards	0.0 - 17.9%

### How Does This School Compare to the Other Dropout Recovery Program Schools in Ohio?



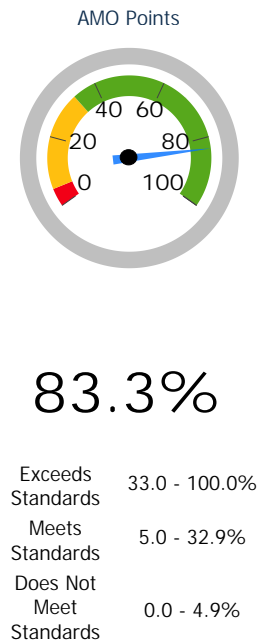
## Gap Closing



This rating shows how well all students are doing in your school in reading, math, and graduation. It answers the question – Is every student succeeding, regardless of income, race, ethnicity, or disability?

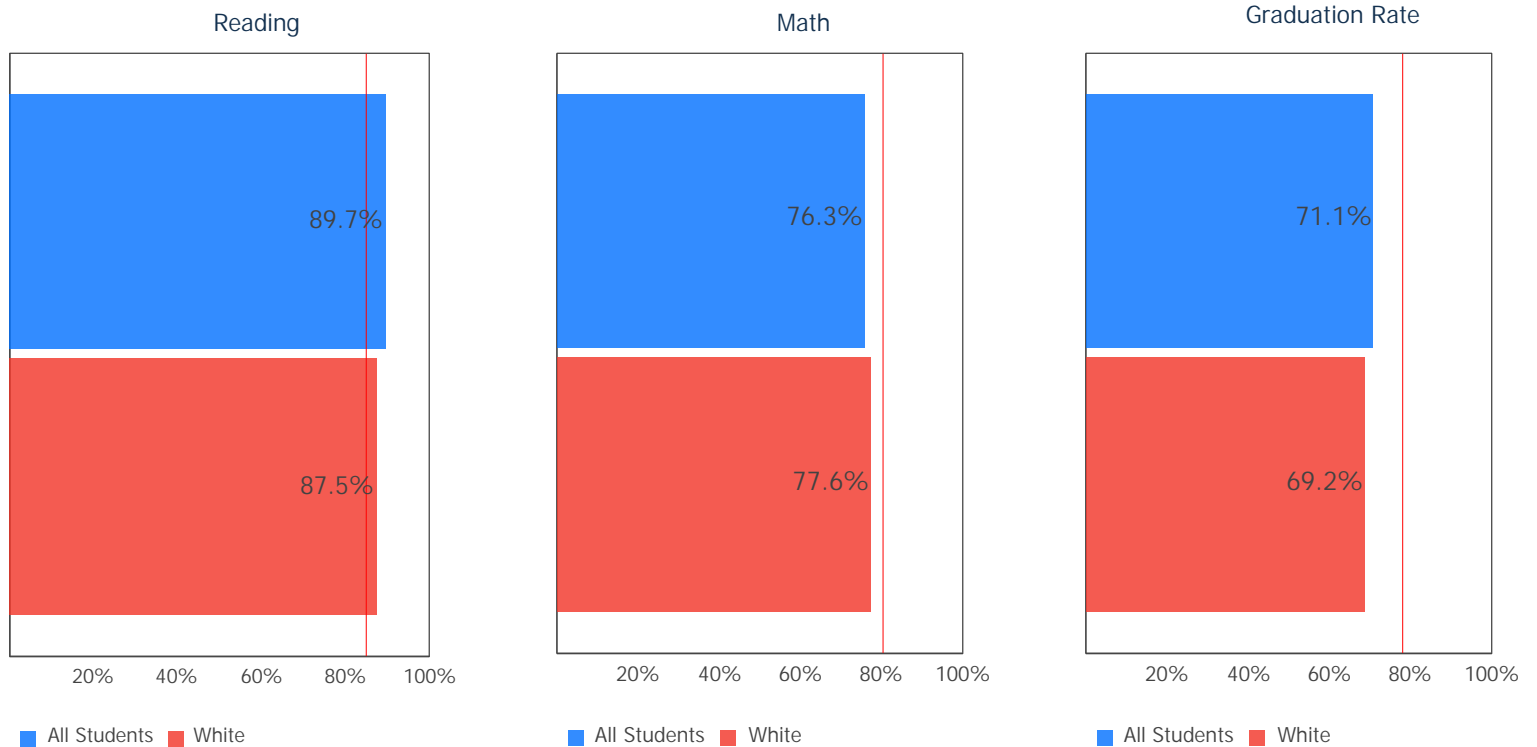
**GRADE**

**Exceeds Standards**



### Annual Measurable Objectives

Annual Measurable Objectives (AMOs) compare the performance of all students to a state goal which is displayed as the red line in the following charts. These charts show how well each group achieves that goal in reading, math and graduation – and emphasize any achievement gaps that exist between groups. The ultimate goal is for all groups to achieve at high levels.



The red line on each graph identifies the Annual Measurable Objective. The 2014 AMO for Reading is 84.9%, for Math is 80.5%, and for Graduation Rate is 78.2%. Subgroups with fewer than 30 students are not rated and do not appear on the graphs.

## Graduation Rate



This rating answers the question – How many students from your school graduate in four, five, six, or seven years?

Directory information current as of the 2013-2014 Report Card publication date

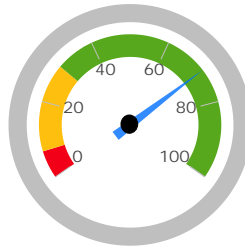
### 4-Year Graduation Rate

The 4-year graduation rate applies to the Class of 2013 who graduated within four years, i.e. students who entered the 9th grade in 2010 and graduated by 2013.

**RATING**  
Exceeds Standards

71.1%

Exceeds 30.0 - 100.0%  
Meets 7.0 - 29.9%  
Does Not Meet 0.0 - 6.9%



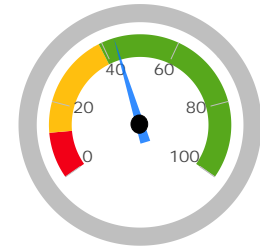
### 6-Year Graduation Rate

The 6-year graduation rate applies to the Class of 2011 who graduated within six years, i.e. students who entered the 9th grade in 2008 and graduated by 2013.

**RATING**  
Exceeds Standards

43.3%

Exceeds 39.0 - 100.0%  
Meets 12.0 - 38.9%  
Does Not Meet 0.0 - 11.9%



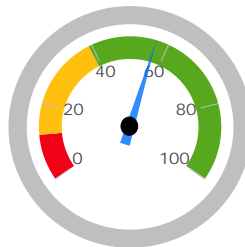
### 5-Year Graduation Rate

The 5-year graduation rate applies to the Class of 2012 who graduated within five years, i.e. students who entered the 9th grade in 2009 and graduated by 2013.

**RATING**  
Exceeds Standards

56.7%

Exceeds 39.0 - 100.0%  
Meets 12.0 - 38.9%  
Does Not Meet 0.0 - 11.9%



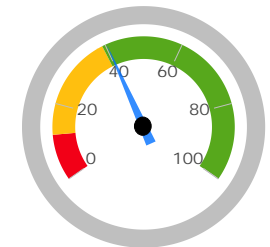
### 7-Year Graduation Rate

The 7-year graduation rate applies to the Class of 2010 who graduated within seven years, i.e. students who entered the 9th grade in 2007 and graduated by 2013.

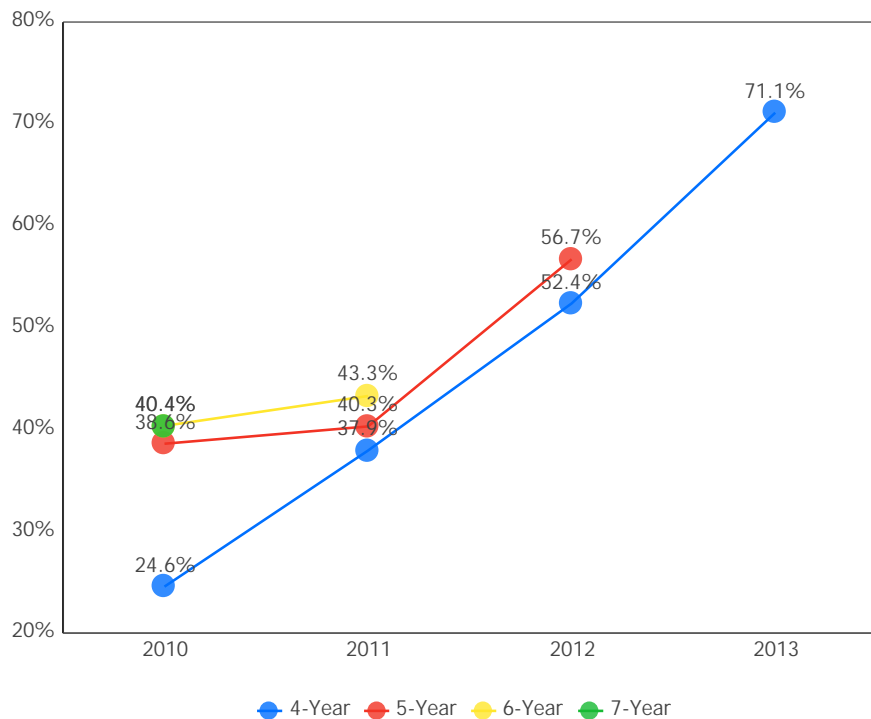
**RATING**  
Exceeds Standards

40.4%

Exceeds 39.0 - 100.0%  
Meets 12.0 - 38.9%  
Does Not Meet 0.0 - 11.9%



Graduation Rate Trend



Note: Because the necessary data is not yet available to calculate every graduation rate, the 5-year graduation rate does not appear in the final year of this graph; the 6-year graduation rate does not appear in the final two years; and the 7-year graduation rate does not appear in the final three years.

How Does This School Compare to the Other Dropout Recovery Schools in Ohio?

